

# *Century*

Innovation in Dentistry



*Manufacturer of Healthcare Furniture Since 1958*

# Century TC-1000 Treatment Center

Pass-thru Upper Storage  
(Standard)

Task Lighting (Standard)

Power Strip (Standard)

Metal Sub Base  
(Standard)

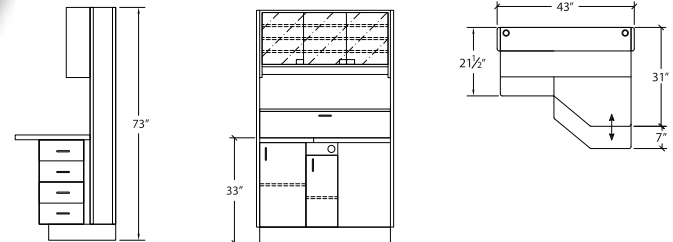
Nitrous Cabinet  
(Standard)

Optional 17" Monitor/Keyboard Arm

Pull-out  
Assistant's  
Work Surface  
(Standard)

Fan Cooled CPU Storage  
Cabinet Included with  
17" Monitor/Keyboard  
Arm Option

Assistant's Side Drawer Bank  
-4 Medium Drawers (Standard)  
-Equipment Drawers (Optional)



**Shown with optional Doctor's drawer bank,  
17" monitor/keyboard arm & Assistants vacuum accessory kit**

# Century MP-1000

## Multi-Position Treatment Center

Pass-thru Upper Storage  
(Standard)

Task Lighting (Standard)

Power Strip (Standard)

Metal Sub Base  
(Standard)

Fan Cooled CPU Storage Cabinet  
Included with 17" Monitor/Keyboard  
Arm Option

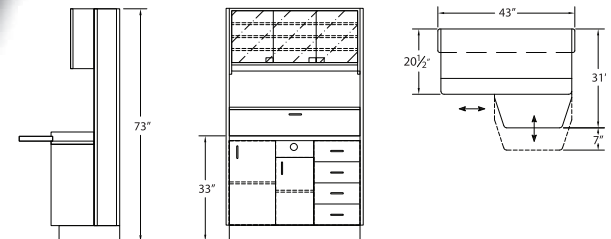


Optional 17" Monitor/Keyboard Arm



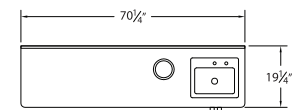
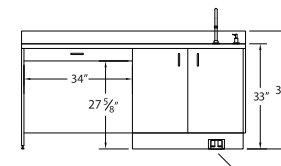
Left/Right Sliding Countertop  
with Pull-out Work Surface  
(Standard)

Assistant's Drawer Bank  
-4 Medium Drawers (Standard)  
-Equipment Drawers (Optional)

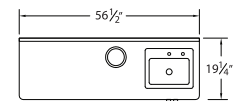
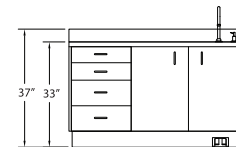


**Shown with optional Doctor's drawer bank and 17" monitor/keyboard arm**

# Century DU-1000 Doctor's Unit

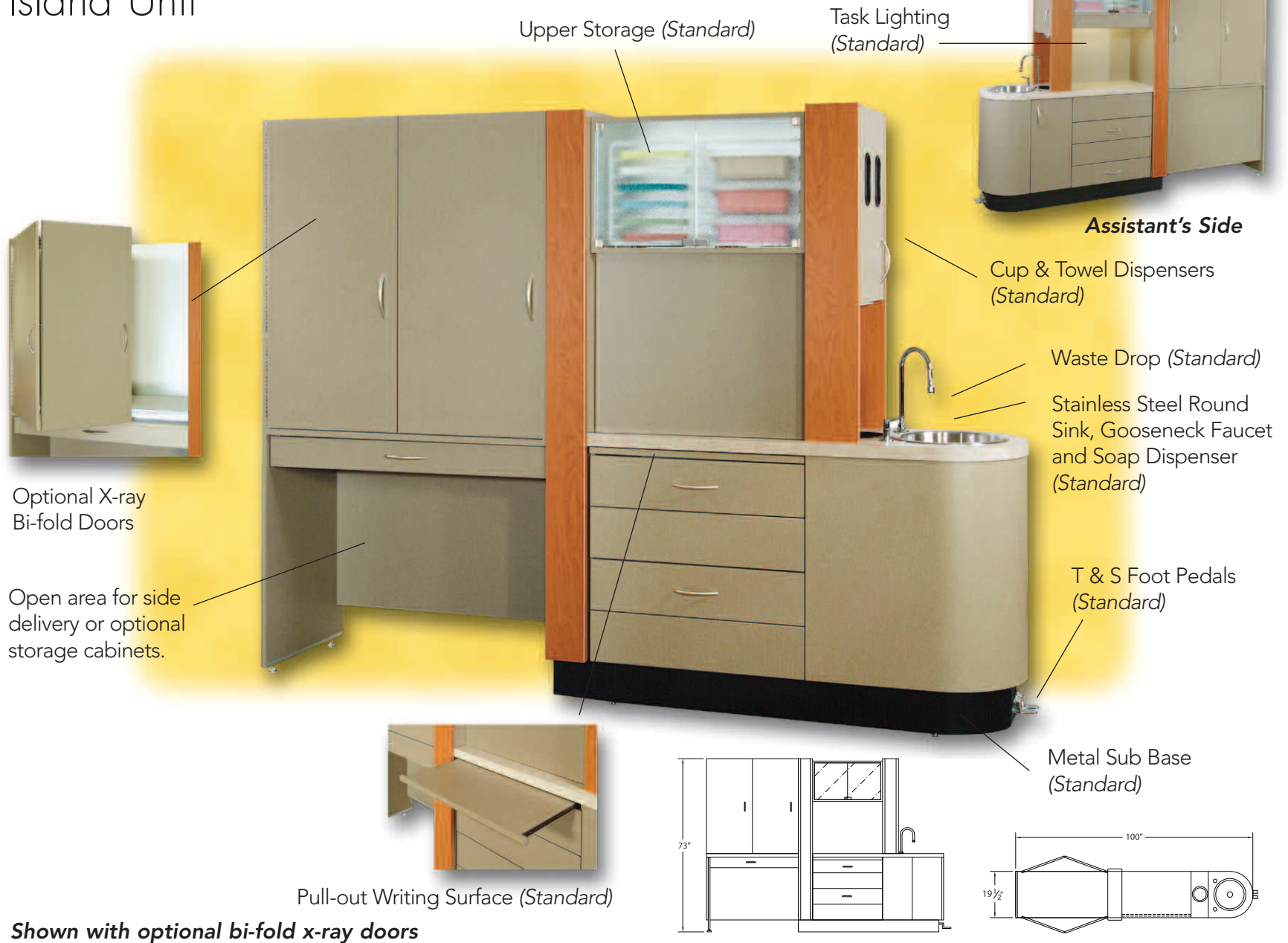


# Century AU-1000 Assistant's Unit



***Also available in left hand configuration***

# Century IU-1000 Island Unit



**Shown with optional bi-fold x-ray doors**

# Century SC-1000

## 12' Sterilization Center



8', 10', 12' or Custom Sizes Available

# Specifications

## TREATMENT CENTER

### Standard Features

Pull-out Assistant's Work Surface  
Assistant's Side Drawer Bank  
(4 med. drawers)  
N20 Cabinet  
Pass-thru Upper Storage Cabinet  
Power Strip  
Task Lighting  
Metabox Drawer System  
Metal Sub Base

### Options

Solid Surface Countertop  
Rear Delivery Insert  
Equipment Drawers  
Extra Drawer Banks  
17" Monitor/Keyboard Arm

### Dimensions

Width: 43"  
Depth: 31"  
Height: 73"  
Countertop Height: 33"

## MULTI-POSITION TREATMENT CENTER

### Standard Features

In-Out/Left-Right Sliding Work Surface  
Assistant's Drawer Bank  
(4 med. drawers)  
N20 Cabinet  
Pass-thru Upper Storage Cabinet  
Power Strip  
Task Lighting  
Metabox Drawer System  
Metal Sub Base

### Options

Solid Surface Countertop  
Rear Delivery Insert  
Equipment Drawers  
Extra Drawer Banks  
17" Monitor/Keyboard Arm

### Dimensions

Width: 43"  
Depth: 31"  
Height: 73"  
Countertop Height: 33"

## DOCTOR'S UNIT

### Standard Features

Stainless Steel Sink  
Gooseneck Faucet  
Foot Pedals  
Soap Dispenser  
Waste drop w/can  
Metabox Drawer System  
Metal Sub Base

### Options

Solid Surface Countertop  
Equipment Drawers  
Extra Drawer Banks  
Glove Dispensers

### Dimensions

Width: 70"  
Depth: 19 1/4"  
Height: 37"  
Countertop Height: 33"

## ASSISTANT'S UNIT

### Standard Features

Stainless Steel Sink  
Gooseneck Faucet  
Foot Pedals  
Soap Dispenser  
Waste drop w/can  
Center drawer Bank  
(3 med. / 2 lg.)  
Metabox Drawer System  
Metal Sub Base

### Options

Solid Surface Countertop  
Equipment Drawers  
Extra Drawer Banks  
Glove Dispensers

### Dimensions

Width: 56"  
Depth: 19 1/4"  
Height: 37"  
Countertop Height: 33"

## ISLAND UNIT

### Standard Features

Stainless Steel Sink  
Gooseneck Faucet  
Foot Pedals  
Soap Dispenser  
Cup Dispenser  
Towel Dispenser  
Waste drop w/can  
Pass-thru Upper Storage  
Metabox Drawer System  
Metal Sub Base

### Options

85" Tall IU-1001  
Solid Surface Countertop  
X-ray Bi-fold Doors  
Equipment Drawers  
Glove Dispensers  
15" Monitor/Keyboard Arm

### Dimensions

Width: 19"  
Depth: 100"  
Height: 73" or 85"  
Countertop Height: 33"

## STERILIZATION CENTER

### Standard Features

Dirty Storage Cabinet (red light)  
Sharps Container  
Dual waste/Bio Pull-out Drawer  
Ultrasonic Section  
Stainless Steel Sink  
Spray Faucet  
Soap Dispenser  
Pull-out Autoclave Shelf  
Pull-out Statim Shelf  
Wrapping Drawer  
Clean Storage Tower (blue light)  
Metabox Drawer System

### Options

8', 10', 12', or Custom Sizes  
Solid Surface Countertop

### Dimensions

Width: 8', 10', 12', or Custom  
Depth: 24"  
Height: 84"  
Countertop Height: 36"

## WALL STORAGE CABINETS

### Standard Features

2 or 3 Bay Sizes  
Tempered Glass Doors  
Adjustable Shelves  
Hanging Bar

### Dimensions

Width: 2 Bay 28"  
3 Bay 41"  
Depth: 16 9/16"  
Height: 17 3/8"



WS-1000  
2 Bay Wall Storage Cabinets



WS-1001  
3 Bay Wall Storage Cabinets



For over 40 years Woodway Manufacturing has been producing American made healthcare furniture for Dentist, Physicians, Hospitals, Veterinarians and Labs. If you are looking for custom operatory furniture we can design, engineer and produce any type of furniture with the same high quality standards as our dental lines.

E. Vine & Woodway Drive  
Hatfield, PA 19440  
Phone: 215-368-4770  
Fax: 215-368-5251  
matt@woodwaydental.com  
www.woodwaydental.com