

Millennium II

Innovation in Dentistry



Manufacturer of Healthcare Furniture Since 1958

Millennium ATC-1000

Assistant's Treatment Console



Optional 17" Monitor/Keyboard Arm

Pass-thru Upper Storage
(Standard)

Task Lighting (Standard)

Power Strip (Standard)

Pull-out
Assistant's
Work Surface
(Standard)



Fan Cooled CPU Storage
Cabinet Included with
17" Monitor/Keyboard
Arm Option

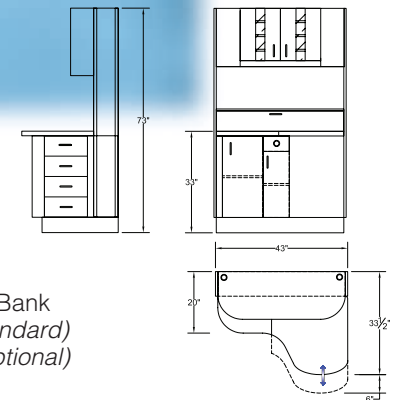


Optional Equipment Drawer

Nitrous Cabinet
(Standard)

Metal Sub Base
(Standard)

Assistant's Side Drawer Bank
-4 Medium Drawers (Standard)
-Equipment Drawers (Optional)



**Shown with optional Doctor's equipment drawer,
17" monitor/keyboard arm & solid surface countertop.**

Millennium ATC-1001

Multi-Position Assistant's Treatment Console



Optional 17" Monitor/Keyboard Arm

Pass-thru Upper Storage
(Standard)

Task Lighting (Standard)

Power Strip (Standard)



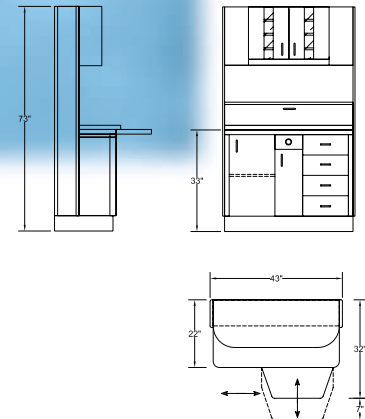
Left/Right Sliding Countertop
with Pull-out Work Surface
(Standard)



Optional Doctor's & Assistant's
Equipment Drawers

Metal Sub Base (Standard)

Fan Cooled CPU Storage Cabinet
Included with 17" Monitor/Keyboard
Arm Option



**Shown with optional Doctor's & Assistant's equipment drawer,
17" monitor/keyboard arm & solid surface countertop.**

Millennium OTC-1000 Operator's Technology Console

Stainless Steel Oval Sink
Gooseneck Faucet & Soap
Dispenser (Standard)



Pull-Out Waste Pod
(Standard)

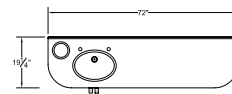
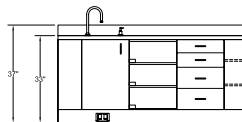


Pull-Out Storage Pod
(Standard)

Foot Pedals (Standard)
Metal Sub Base (Standard)



Equipment Drawers (Standard)
Optional Blue Lighting



Shown with optional solid surface countertop.

Millennium ASC-1000 Assistant's Support Console

Stainless Steel Oval Sink
Gooseneck Faucet & Soap
Dispenser (Standard)



Pull-Out Storage Pod
(Standard)

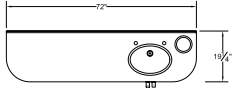
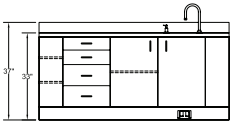


Metal Sub Base (Standard)

Foot Pedals (Standard)

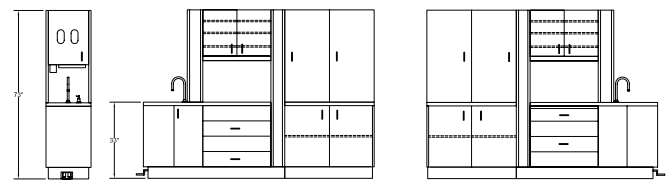
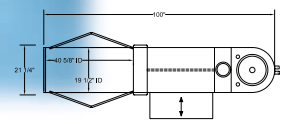


Pull-Out Waste Pod
(Standard)



**Shown with optional solid surface countertop.
Also available in left hand configuration.**

Millennium ITC-1000 Island Technology Console

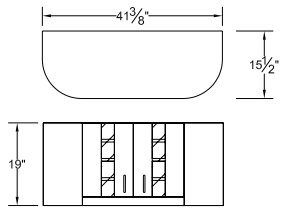


85" ITC-1000 shown w/optional bi-fold x-ray doors & solid surface countertop.

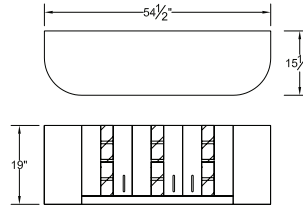
Millennium USC-1000 Upper Storage Cabinets



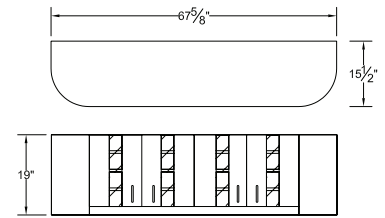
USC-1000 2 Bay Upper Storage



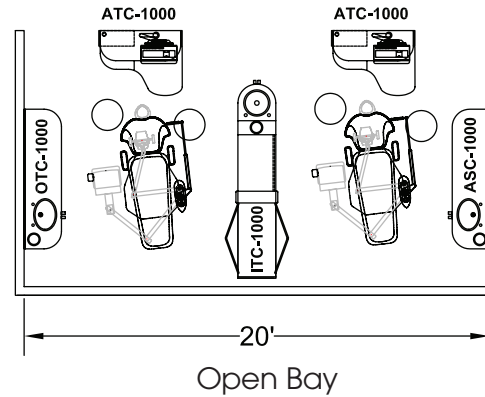
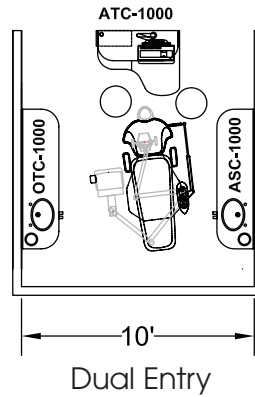
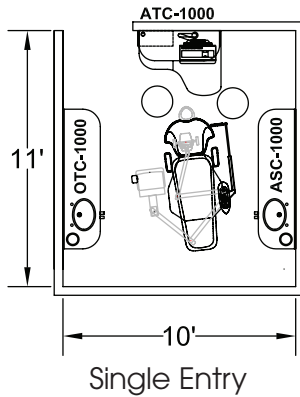
USC-1001 3 Bay Upper Storage



USC-1002 4 Bay Upper Storage



Operator Set-ups



Specifications

| ASSISTANT'S TREATMENT CONSOLE | MULTI-POSITION ATC | OPERATOR'S TECHNOLOGY CONSOLE | ASSISTANT'S SUPPORT CONSOLE | ISLAND TECHNOLOGY CONSOLE | UPPER STORAGE CABINETS |
|---|---|---|--|--|--|
| <p>Standard Features</p> <ul style="list-style-type: none"> Pull-out Assistant's Work Surface Assistant's Side Drawer Bank (4 med. drawers) N2O Cabinet Pass-thru Upper Storage Cabinet Power Strip Task Lighting Metalbox Drawer System Metal Sub Base <p>Options</p> <ul style="list-style-type: none"> Solid Surface Countertop Rear Delivery Insert Equipment Drawers Extra Drawer Banks 17" Monitor/Keyboard Arm Upper Cabinet Blue Accent Lighting <p>Dimensions</p> <ul style="list-style-type: none"> Width: 43" Depth: 33 1/2" Height: 73" Countertop Height: 33" | <p>Standard Features</p> <ul style="list-style-type: none"> Left/Right Sliding Work Surface Pull-out Assistant's Work Surface N2O Cabinet Pass-thru Upper Storage Cabinet Power Strip Task Lighting Metalbox Drawer System Metal Sub Base <p>Options</p> <ul style="list-style-type: none"> Solid Surface Countertop Rear Delivery Insert Equipment Drawers Extra Drawer Banks 17" Monitor/Keyboard Arm Upper Cabinet Blue Accent Lighting <p>Dimensions</p> <ul style="list-style-type: none"> Width: 43" Depth: 32 1/4" Height: 73" Countertop Height: 33" | <p>Standard Features</p> <ul style="list-style-type: none"> Stainless Steel Oval Sink Gooseneck Faucet Soap Dispenser Foot Pedals Equipment Drawers (3 Glass Doors) Waste Drop Pull-out Waste Pod Pull-out Storage Pod Metal Sub Base <p>Options</p> <ul style="list-style-type: none"> Solid Surface Countertop Solid Surface Bowl Side Delivery Insert Glove Dispensers Accent Blue Lighting (Equipment Drawers) <p>Dimensions</p> <ul style="list-style-type: none"> Width: 72" Depth: 19 1/4" Height: 37" Countertop Height: 33" | <p>Standard Features</p> <ul style="list-style-type: none"> Stainless Steel Oval Sink Gooseneck Faucet Soap Dispenser Foot Pedals Drawer Bank (2 Medium/2 Large) Waste Drop Pull-out Waste Pod Pull-out Storage Pod Metal Sub Base <p>Options</p> <ul style="list-style-type: none"> Solid Surface Countertop Solid Surface Bowl Glove Dispensers <p>Dimensions</p> <ul style="list-style-type: none"> Width: 72" Depth: 19 1/4" Height: 37" Countertop Height: 33" | <p>Standard Features</p> <ul style="list-style-type: none"> Stainless Steel Round Sink Gooseneck Faucet Soap Dispenser Foot Pedals Cup Dispenser Towel Dispenser Waste Drop Pass-thru Upper Storage Metal Sub Base Dual Glove Dispensers <p>Options</p> <ul style="list-style-type: none"> Solid Surface Countertop Solid Surface Bowl X-ray Bi-fold Doors 17" Monitor/Keyboard Arm Equipment Drawers <p>Dimensions</p> <ul style="list-style-type: none"> Width: 19 1/2" Depth: 100" Height: 73" – 85" Countertop Height: 33" | <p>Standard Features</p> <ul style="list-style-type: none"> Radius Ends Adjustable Shelves (3) Hanging Bar <p>Options</p> <ul style="list-style-type: none"> Accent Blue Lighting <p>Dimensions</p> <ul style="list-style-type: none"> Width: 2 Bay 41 3/8" 3 Bay 54 1/2" 4 Bay 67 5/8" Depth: 15 1/2" Height: 19" |

For over 40 years Woodway Manufacturing has been producing American made healthcare furniture for Dentists, Physicians, Hospitals, Veterinarians and Labs. If you are looking for custom operatory furniture we can design, engineer and produce any type of furniture with the same high quality standards as our dental lines.



Woodway Manufacturing Co., Inc.

E. Vine & Woodway Drive
 Hatfield, PA 19440
 Phone: 215-368-4770
 Fax: 215-368-5251
 Email: matt@woodwaydental.com
 www.woodwaydental.com